

Popup Workshop Version 1.1 Documentation

February 2005

Susan Hendrix, hendrixs@cs.colorado.edu
Craft Technology Group
<http://www.cs.colorado.edu/~ctg/>

Introduction

Popup Workshop is a program to help you design simple pop-up books and cards, and print a pattern on your printer to cut and fold.

Although this early version of the software creates only a limited set of pop-up forms, we hope that using this application will start you on your way to learning about pop-up design. See the "For Further Reading" section to get more information on how to add to these pop-ups, or create your own designs using additional forms, or, if you are a teacher, how to incorporate pop-ups in your classes.

We will be updating the software to add more features, fix bugs, and to add new pop-up forms.

System Requirements

Version 1.1 of Popup Workshop requires Java 1.4 or later.

If you have a Mac, this means that you must have OS X, and if you are running an earlier Java version, you may have to upgrade Java. (Java 1.4 is available via Software Update.)

We have added Windows support in Version 1.1. You may have to upgrade Java to version 1.4 if you do not have it currently. See <http://www.sun.com/software/learnabout/java/>.

A color printer is desirable, but is not required.

Downloading, Installing and Running Popup Workshop

We ask that you fill out a registration form to download Popup Workshop. There is no charge for the application. We appreciate your bug reports, ideas for additions and improvements, and pictures of your creations to put on our web page.

For Mac: Click on the download link on the website, and wait for the download to complete. The downloaded disk image should automatically open and mount. If it does not, double click the .dmg file that you downloaded to open and mount the disk image containing the Popup Workshop folder. Drag the Popup Workshop folder to your Applications folder. Double-click the Workshop icon to start Popup Workshop.

For Windows: Click on the download link, and choose "Save" to download the zip folder. Double-click the resulting folder to obtain the .jar file. Double-click the .jar file to run Popup Workshop.

General Information

Popup Workshop consists of two windows, the Popup Editor and the Popup Viewer. Figure 1 shows the windows as they appear on opening the application.

Changes are made using the editor window. This is also the design that you will print and cut to make your pop-up. The viewer allows you to see how the finished pop-up will look, and to open and close it using the slider beside the pop-up.

Notice that the pop-up starts with a single fold down the center. The pop-up is designed to fit on a letter-sized sheet when printed.

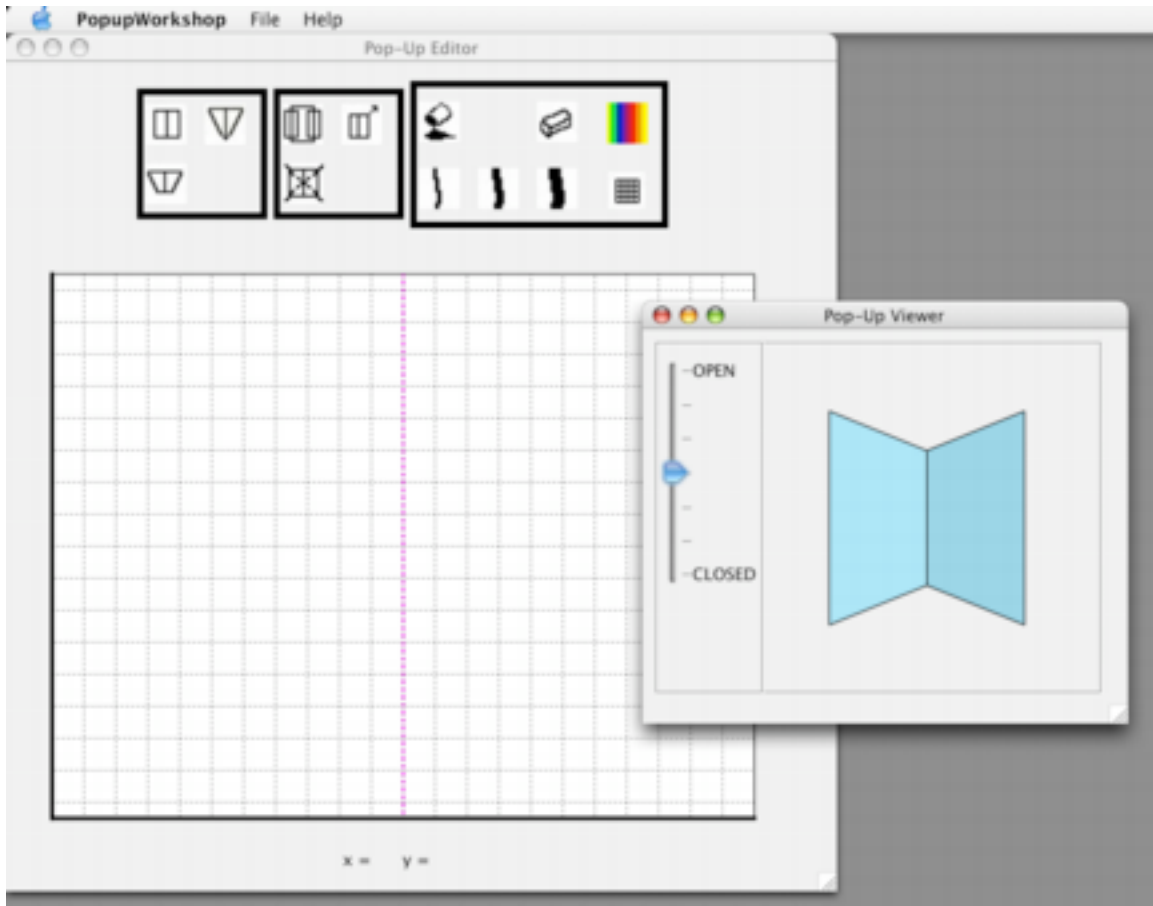


Figure 1: Popup Workshop starting windows

Folds and cuts are designated as follows:

Mountain folds fold toward you. They are drawn as blue dashed lines.

Valley folds fold away from you. (The starting centerfold is a valley fold.) They are drawn as magenta dashed lines.

Cuts are drawn as red solid lines.

The Editor starts with a grid of black dashed lines to help you line up your design. You can turn the grid off and on by clicking on the grid button, which looks like this:



Other actions are chosen with other buttons. The chosen button turns yellow to let you know which one it is.

There is a position indicator at the bottom of the Editor Window. This gives the x- and y-coordinates of the cursor when it is in the page area.

Adding Elements

Pop-ups, even very complicated ones, are made up of simpler forms or elements. In this version of Popup Workshop, we support 3 such elements. All of them are made up of cuts and folds in the original page. There are other elements which are made by applying forms cut from additional sheets of paper, and we plan to add some of these later, in Version 2.0.

All of these elements are placed on top of a fold. This can be the centerfold that you start with when you start the application, or a fold created by another element. In this way, you can build up more complex designs. You can place elements on mountain folds or valley folds.

In each case, add an element by first selecting the button representing the type of element you wish to add. Then click and hold the mouse button near the fold on which you want to place the element. Drag the mouse to make the element the size you want.

The leftmost area of buttons is where you look to choose elements to add. The elements we support are:



Parallel double slit: This element has two cuts (at the top and bottom) and two folds at the sides, along with a fold in the center. The folds are all parallel.



Single slit: This element has only one cut, and three folds. It can be placed point up or point down.



Non-parallel double slit: This element is just a single slit with the point cut off. It has two cuts and two folds like the parallel double slit, but the sides are not parallel.

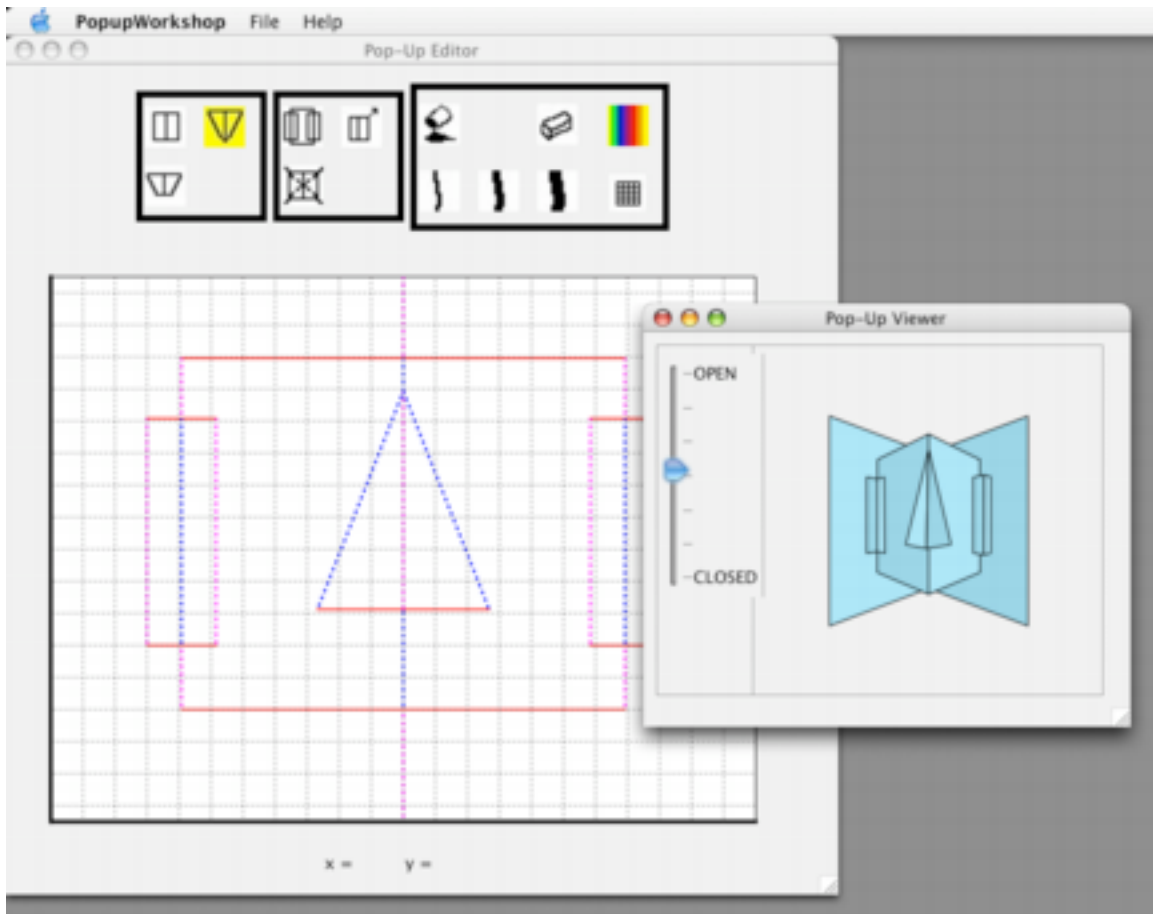


Figure 2: Popup Workshop with design in progress

Changing Elements

Once you have some elements added to your pop-up, you can change them. Select the 'change' button, which looks like this:



You will notice that small green squares appear on points of your elements. Click with your mouse on the point you want to change, and drag the point. Notice that you may not be able to drag the point in some directions. The program only allows you to change elements in ways that will still allow them to fold correctly when you open and close the page. (Can you figure out what the 'rules' are?)

If you have additional elements on a fold you are changing, they will move to remain on the fold.

Deleting Elements

You can delete elements, too. Select the 'delete' button in the center section of buttons, which looks like this:



You will notice that small red squares appear on points of your elements. Click with your mouse on any point of the element you want to delete. It will disappear.

If you delete an element that has more elements on top of its folds, the ones on top will be deleted as well.

Replicating Elements

Sometimes you want to have the same (or similar) elements on opposite sides of another element. You can make this easy by replicating. Select the 'replicate' button, which looks like this:



You will notice that small blue squares appear on points of your elements. Click with your mouse on any point of the element you want to replicate. If it is on the outside fold of another element, a copy will be placed on the other outside fold. (Elements placed on folds of the replicated element will not be replicated.)

Decorating Elements

There are several decorating tools available. Bring up a color palette to select a color to use with the 'color' button, which looks like this:



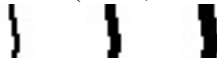
After you select a color, the color of the borders of the button areas will change to remind you of the color you are using.

You can fill an area of an element with color by using the 'fill' button, which looks like this:



After selecting the 'fill' button, click in each area you wish to fill with the current color. If you wish to erase fill color, select white in the color palette, and use another fill to erase the previous color.

You can draw lines with three pen tools (small, medium and large). The buttons look like this:



Use your mouse to draw after you pick the pen thickness you want.

To erase the drawing you have done, use the 'erase' button, which looks like this:



You will notice that small red squares appear on the ends of the lines you have drawn. Click with your mouse on any red square to remove that line.

Saving and Printing Your Popup

When you have a pop-up that you want to print, use File ⌘ Print to bring up the system print dialog. (Do you have the grid turned off?)



Figure 3: Two pop-ups made with Popup Workshop

If you wish to have a .jpg file to decorate further in a program such as Adobe Illustrator or PhotoShop, you can use the File ◇ Export Image menu item. This will bring up a system dialog box so that you can name your file, and tell the system where to put it. You will want to put .jpg on the end of the file.

You can save your work in a form that will let you work on it later. Use File ◇ Save or File ◇ Save As to bring up a system dialog to give a filename and place to put it. You can open a saved pop-up with the File ◇ Open menu item. Popup Workshop files are saved in a format called XML.

If you decide that you want to start over from scratch, choose the File ◇ New menu item. You will be given a chance to save your work if you have not done so. You can also use File ◇ Revert to Last Saved to get rid of any changes since you last used the Save option.

Saving and Printing Your Popup

Print out your pop-up. Cut on the cut lines (the red solid ones) and fold the dotted lines. It helps to go over the dotted lines with a ballpoint pen that is out of ink to make them fold more easily. You may want to make a few very simple designs to practice first. Avoid very small elements when you are first starting.

If you have printed your pop-up on standard printer paper, you may want to glue it to an outer card of construction paper, card stock, or cardboard. Figure 3 shows a pop-up made with Popup Workshop, printed on standard paper on a black and white printer, and mounted on construction paper, and a similar pop-up, printed on a color printer.

Try decorating your pop-ups with foil, stickers, your own pictures, or pictures cut from magazines or newspapers. You can add pictures on the sides of elements that stick up beyond the centerfold of the element and they will still fold. In fact, in many cases, you can cut away part of an element, or add to it, and still have a pop-up that will open and close properly. Experiment!

Here are some more pop-ups made with PopupWorkshop.



Figure 4: Other pop-ups made with Popup Workshop

Add a story to a set of pop-ups and make a book by stapling the pages together. You can also put on other pop-up elements that you make yourself. Look at the 'For Further Reading' section for some places to learn more about making pop-ups and books, and how to make different pop-up elements.

Trouble Reporting

Please send any bugs you find, or things you think we should add to Popup Workshop, to Sue Hendrix, hendrixs@cs.colorado.edu. Let us know what you think!

For Further Reading

If you enjoy Popup Workshop, you will probably want to know more about making pop-ups. We recommend one website in particular, the home page of Robert Sabuda, who is a famous paper engineer. His site is at:

<http://robertsabuda.com/>

Try the 'Explore Pop-ups' section for some simple pop-ups you can make.

If you want to know more about making your own books, check out this website:

<http://library.thinkquest.org/J001156/makingbooks/makeown.htm>

Or you can get this book:

Gwen Diehn, *Making Books that Fly, Fold, Wrap, Hide, Pop Up, Twist, and Turn*, Lark Books, New York, 1998.

There are some good books for young people on pop-up making. Try these:

Duncan Birmingham, *Pop Up! : A Manual of Paper Mechanisms*, Tarquin Pubns, Norfolk, 2000.

Barbara Valenta, *Pop-O-Mania: How to Create Your Own Pop-Ups*, Hamlyn, London, 1997.

If you are a teacher, and want to incorporate pop-ups in your classes, try these resources:

Paul Johnson, *Pop-up Paper Engineering: Cross-Curricular Activities in Design Technology, English, and Art*

Simmt, Elaine and Brent Davis. "Fractal Cards: A Space for Exploration in Geometry and Discrete Mathematics." *Mathematics Teacher*, 91

(February 1998):102-108.
Diego Uribe, Fractal Cuts, Tarquin Publications, 1999.

And for more complex projects:

David A. Carter, James Diaz, The Elements of Pop-Up : A Pop-Up Book for Aspiring Paper Engineers, Little Simon, New York, 1999.

Masahiro Chatani, Pop-up Greeting Cards, Ondori/Japan Publications, Tokyo, 1986.

Paul Jackson, Paul Forrester, The Pop-Up Book : Step-By-Step Instructions for Creating over 100 Original Paper Projects, Henry Holt and Co., New York, 1996.

Known Bugs in This Version

1. Sometimes have problems with changes, especially involving triangles. Need to track these down. Especially show up when changing 3 deep structures on the centerline, or other deep ones.
2. The animation occasionally produces odd results—twisted or obviously wrong. This most often happens when an element is newly added and goes away as it is moved, but can happen at other times as well.

Changes in Version 1.1

1. Fixed a problem with getting fatal errors when adding an element with no vertical or horizontal component. The interface does not allow adding such an element.
2. Changes have been made to the animation, which should be faster, although more changes are planned, as it can still be slow at times.
3. Added a display to show x and y coordinates when the mouse is in the Editor area.
4. Added support for Windows.
5. Added Export as a menu item. This menu item produces a .jpg that can be imported to programs accepting .jpg files.
6. Added New, Open, Save, Save As, and Revert to Last Saved menu items.

Acknowledgements

The work described in this documentation has been supported in part by National Science Foundation grant REC0125363, and by a gift from Mitsubishi Electric Research Laboratories (MERL) in Cambridge, Massachusetts.